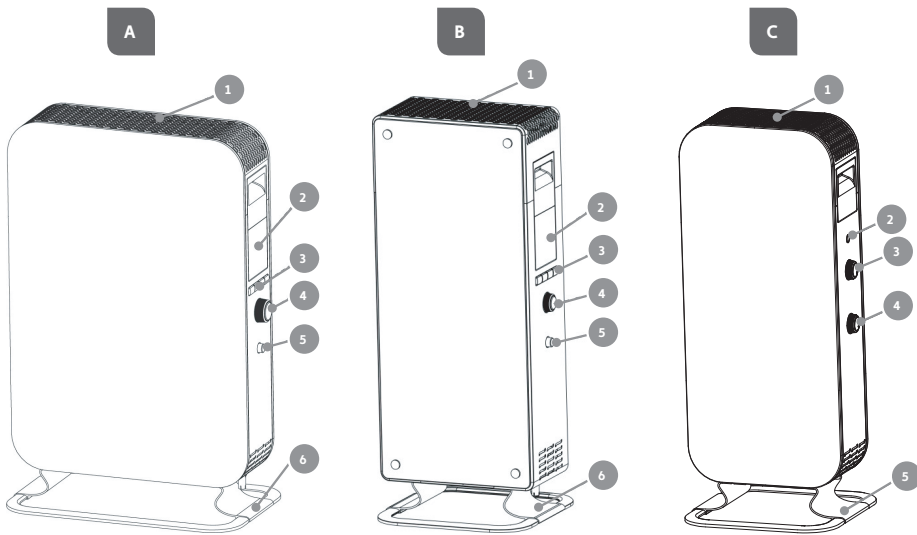


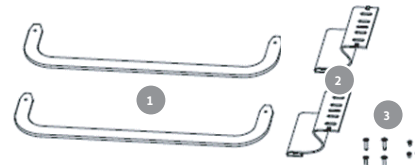


# Mill Gentle Air oil filled radiator Illustrations

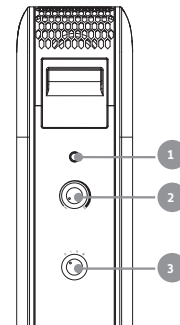
## 1. DESCRIPTION OF THE HEATER



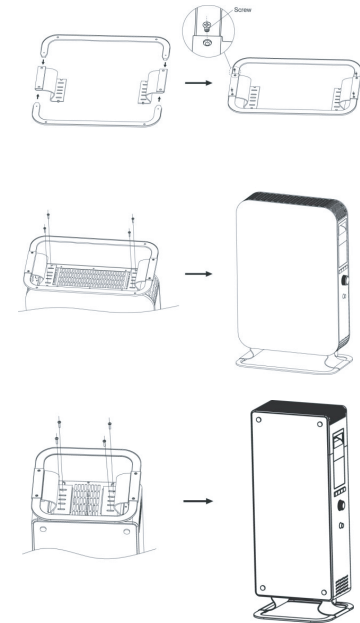
## 2. PARTS



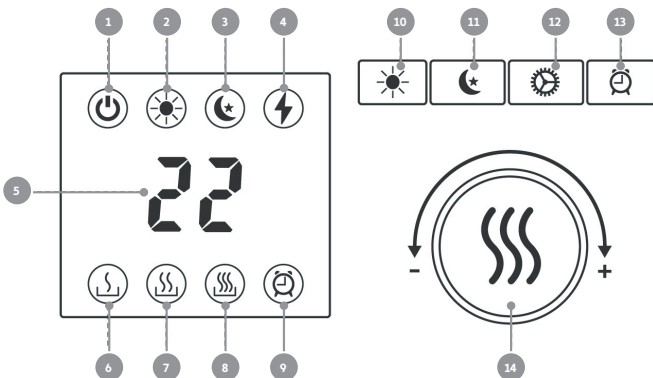
## 4. INSTRUCTION MECHANICAL THERMOSTAT



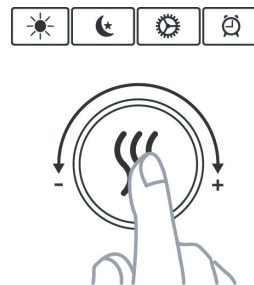
## 3. ASSEMBLY



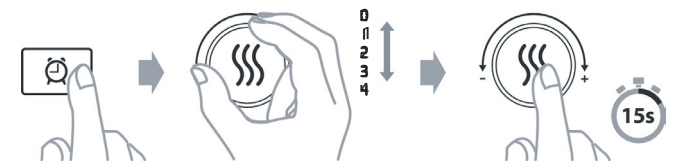
## 5. INSTRUCTIONS DAY/NIGHT THERMOSTAT



## 6. USAGE DAY/NIGHT THERMOSTAT

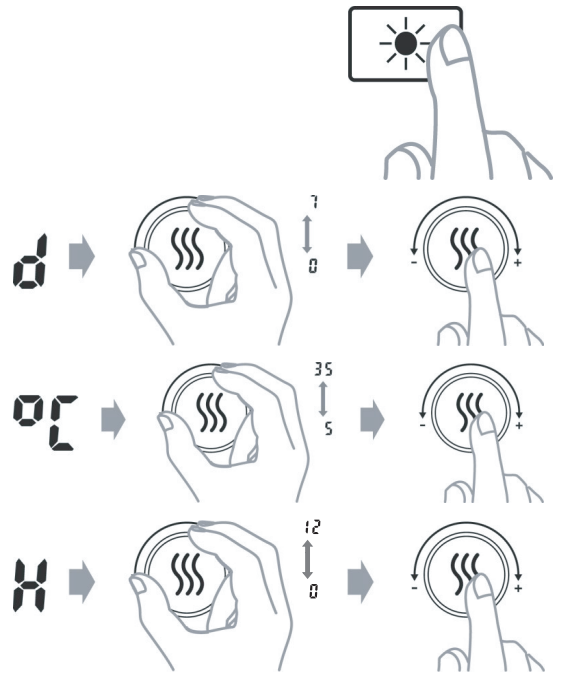


## 7. TIMER FUNCTION

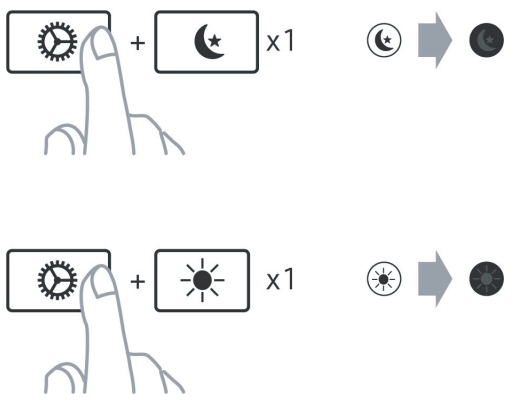




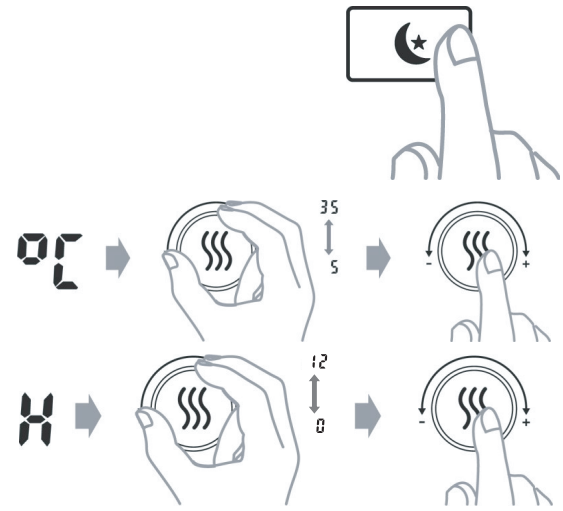
## 8. HOW TO ACTIVATE DAYTIME SETBACK



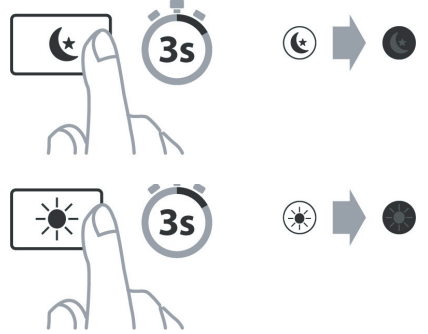
## 14. CANCEL (SKIP) SETBACK PERIOD



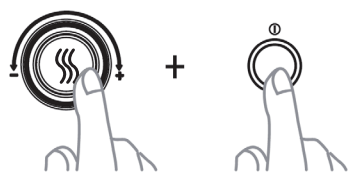
## 9. HOW TO ACTIVATE NIGHTTIME SETBACK



## 15. DELETE A SETBACK PROGRAM



## 17. RESETTING THE HEATER



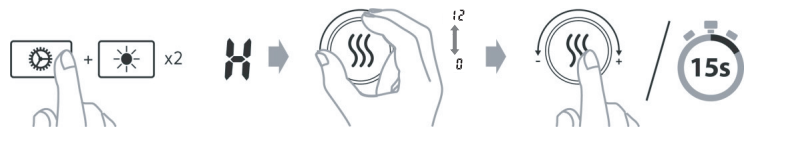
## 10. CHANGE SETBACK TEMPERATURE – DAYTIME



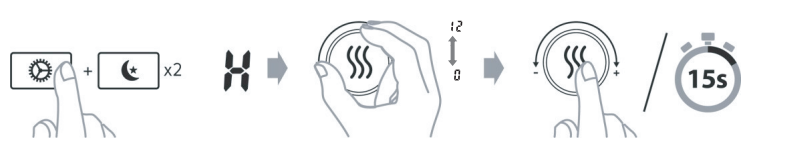
## 11. CHANGE SETBACK TEMPERATURE – NIGHTTIME



## 12. CHANGE NUMBER OF HOURS – DAYTIME



## 13. CHANGE NUMBER OF HOURS – NIGHTTIME



## 16. TEMPERATURE CALIBRATION

